



Flight Light Inc.
 2708 47th Ave.
 Sacramento, California, U.S.A.
 95822-3806



PH (916) 394-2800 **FX (916) 394-2809**
TF (800) 806-3548 **EM info@flightlight.com**

LED Heliport Perimeter Light

ICAO Type:

Touchdown and lift-off area perimeter light for helicopter non-instrument and non-precision approaches.

Compliant to:

ICAO Annex 14, Vol II, 1999

Our heliport perimeter lights provide an LED based solution to the ICAO touchdown and lift-off area perimeter style of steady-burning lights. The lights are currently available in blue, green, yellow, red or clear LEDs operating at 120, 240 VAC or 12, 24 VDC. Each configuration is available as original equipment or as direct lens/lamp field retrofit to existing conventional light bases. This fixture may be mounted on a base plate, junction box or stake, sold separately.

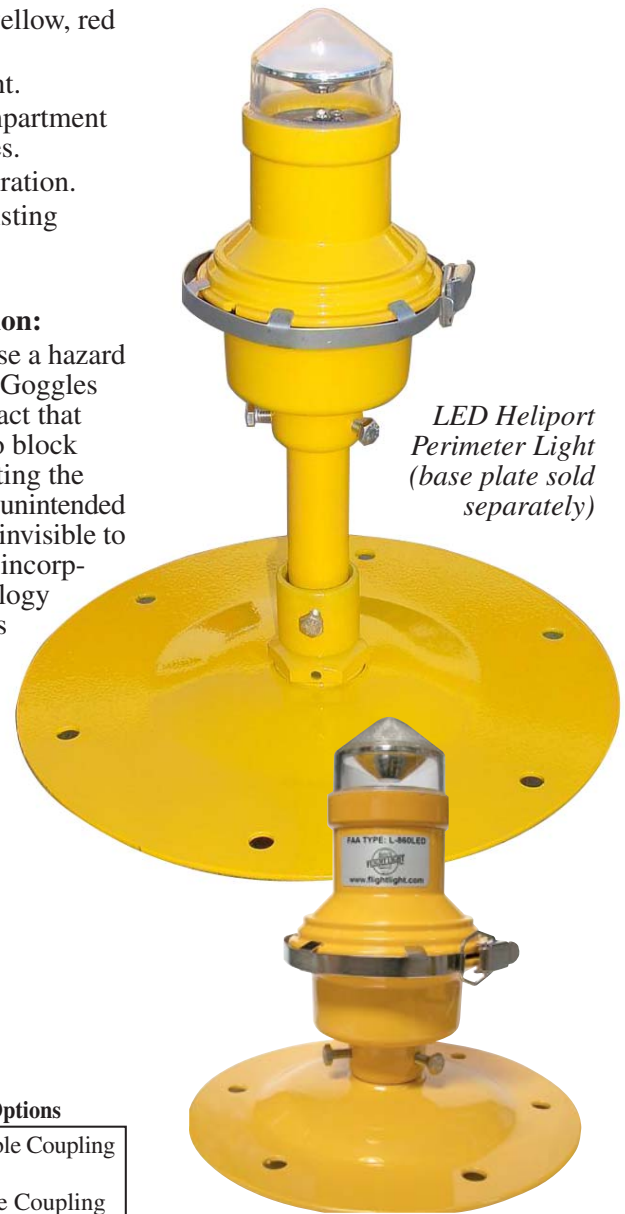
Features:

- LED life rated up to 70,000 hours.
- 95% less power than an equivalent incandescent light.
- 5-watts power consumption.

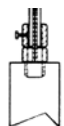
- Available in blue, green, yellow, red or clear LEDs.
- Weather/corrosion resistant.
- Self contained wiring compartment eliminates additional boxes.
- Resistant to shock and vibration.
- Direct replacement for existing incandescent lighting.
- 5 year warranty.

Visible/Infrared LED Option:

Common LED lights can pose a hazard to pilots using Night Vision Goggles (NVGs). This is due to the fact that NVGs typically use filters to block cockpit lighting from saturating the imaging system. This has the unintended effect of making LED lights invisible to pilots. In response, we have incorporated NVG friendly technology into our fixture, giving pilots using night vision goggles unmatched visibility of the helipad touchdown and lift-off area (TLOF).



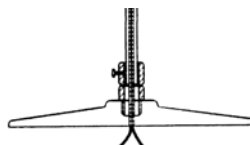
LED Heliport Perimeter Light (base plate sold separately)



Stake Mounted
 30" Angle-Iron Mounting Stake (sold separately)



J-Box Mounted
 30-7609 J-Box (sold separately)



Base Mounted
 8.5" or 12" Base Plate (sold separately)

Ordering Code

Fixture Type	Output*	Power	Mounting Height	Fixture Options
HL-860	BL: Blue	240: 240VAC	8: 8" (no frangible coupling)	1: 1.5" Frangible Coupling (13-FC1.5)
	GL: Green	120: 120VAC	14: 14" (standard)	
	YL: Yellow	24: 24VDC	24: 24" (extended)	2: 2" Frangible Coupling (13-FC2.0)
	RL: Red	12: 12VDC	30: 30" (extended)	
	CL: Clear			
IR: Infrared				
HL-860				

* Green is currently the recommended color for heliport perimeter lights. Infrared can be used in conjunction with color LEDs.

Shallow Base Mounted

With this mounting option the overall installed height is less than 8 inches, complying with AC 150/5390-2B requirements for raised perimeter lights. 5" Shallow Base and 8.5" Base Plate (sold separately)

Visit our web site: www.flightlight.com



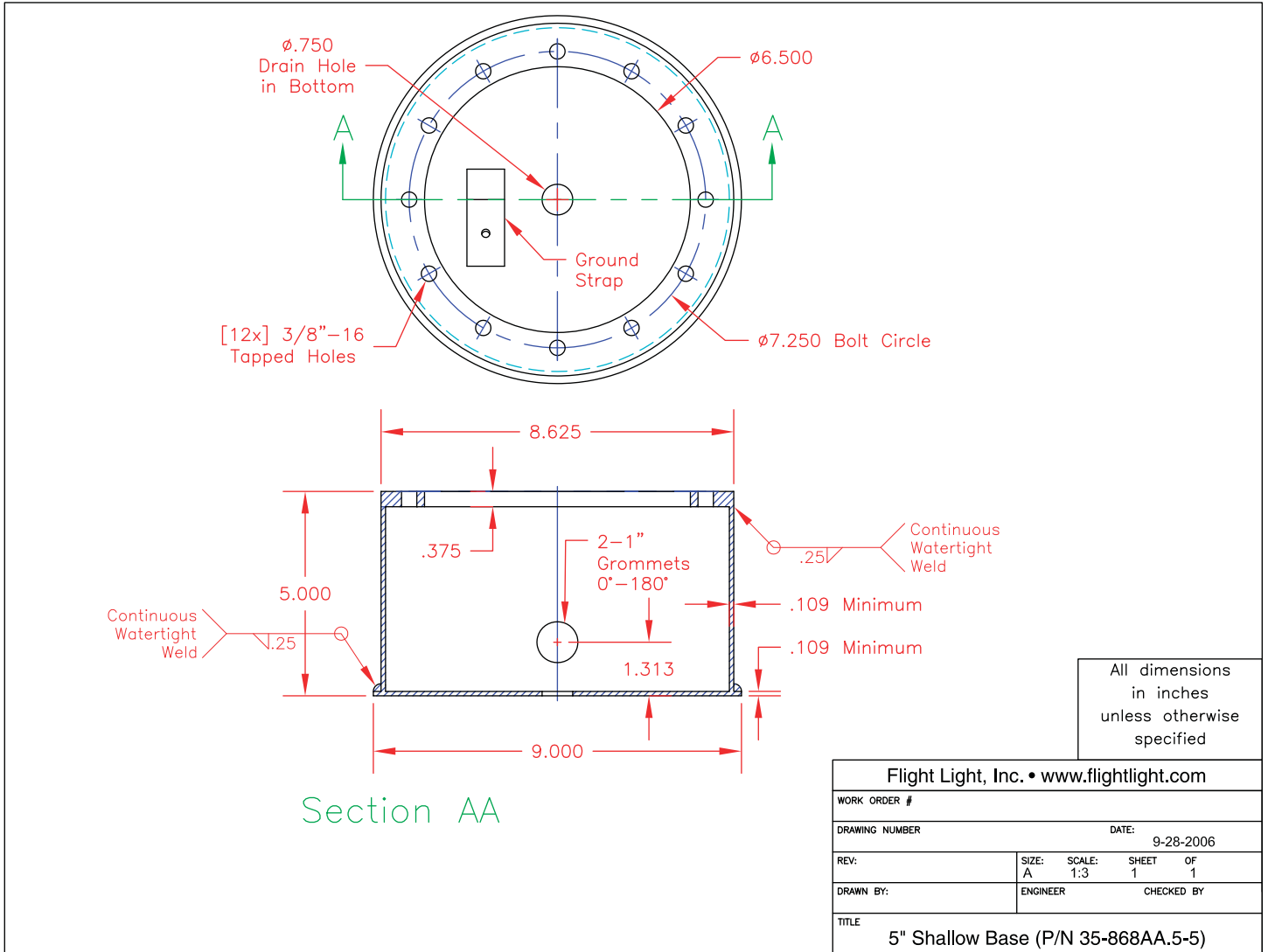
Flight Light Inc.
 2708 47th Ave.
 Sacramento, California, U.S.A.
 95822-3806



PH (916) 394-2800
 TF (800) 806-3548

FX (916) 394-2809
 EM info@flightlight.com

LED Heliport Perimeter Light



Visit our web site: www.flightlight.com



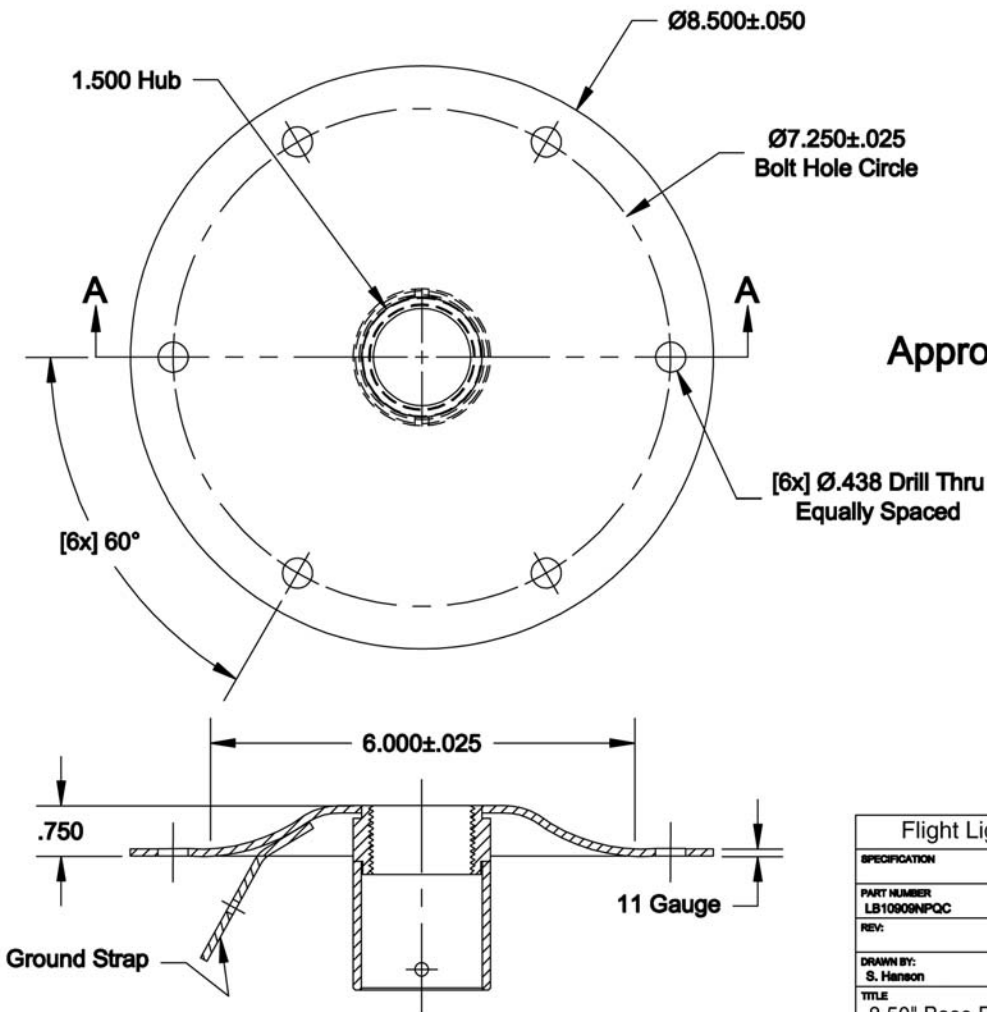
Flight Light Inc.
 2708 47th Ave.
 Sacramento, California, U.S.A.
 95822-3806



PH (916) 394-2800
 TF (800) 806-3548

FX (916) 394-2809
 EM info@flightlight.com

LED Heliport Perimeter Light



Approval _____

x/x=.030
 .xx=.010
 .xxx=.005
 .xxxx=.0005

All dimensions
 in inches
 unless otherwise
 specified

Flight Light, Inc. • www.flightlight.com			
SPECIFICATION			
PART NUMBER LB10909NPOC		DATE 3/28/2008	
REV:	SIZE A	SCALE 1:2	SHEET OF 1 1
DRAWN BY: S. Hanson		ENGINEER	
TITLE 8.50" Base Plate, 7.25" BC (P/N 35-1935AA-25)			

Visit our web site: www.flightlight.com

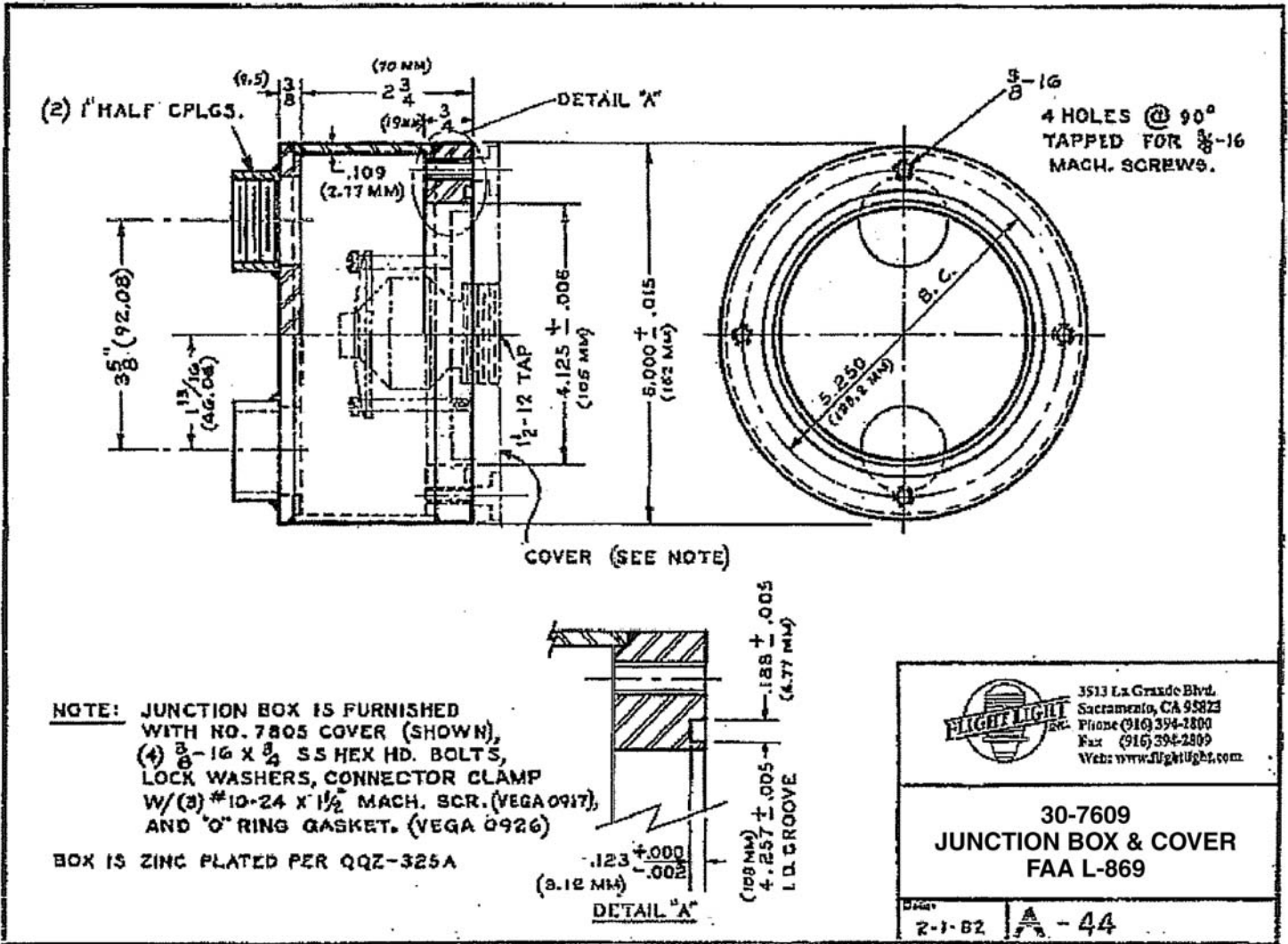


Flight Light Inc.
 2708 47th Ave.
 Sacramento, California, U.S.A.
 95822-3806



PH (916) 394-2800 FX (916) 394-2809
 TF (800) 806-3548 EM info@flightlight.com

LED Heliport
 Perimeter Light



Visit our web site: www.flightlight.com