



Flight Light Inc.
2708 47th Ave.
Sacramento, California, U.S.A.
95822-3806

PH (916) 394-2800 FX (916) 394-2809
TF (800) 806-3548 EM info@flightlight.com

ZA292
LED or Halogen
Heliport Perimeter
Inset Light

Compliances

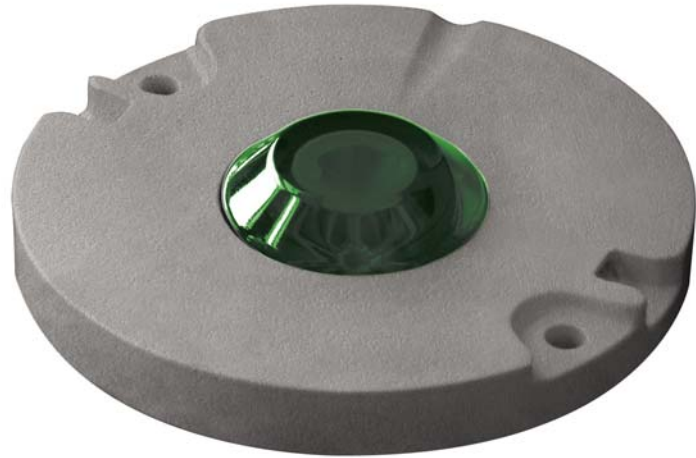
FAA: AC-150/5345-46C; L-852E,
L-852F, L-852T
AC-150/5390-2B and
Engineering Brief No. 67
ICAO: Annex 14 circular guidance
5.3.6, 5.3.9.8, 5.3.9.9
CAA: CAP168 Table 6A/1 Low
Intensity, taxiway edge and
circular guidance
NATO: STANAG 3316, Annex C, Fig. 3
BSI: BS3224, Part 5, Insert fittings
IEC: 61827

Applications

Used to replace elevated helipad
perimeter lights at locations where the
lights are frequently knocked down by
aircraft or maintenance vehicles.

Why Our ZA292 is Better

- Lightweight and robust aluminum alloy construction.
- Pressure test plug ensures moisture-proof light cavity.
- Prism removal and replacement achieved without need for adhesives or sealants.
- Pre-focused optics simplify maintenance.
- Corrosion resistant anodized finish.
- Available in 12-24 VDC or 120 VAC versions.
- Direct retrofit, drop in replacement. Factory retrofits available for your existing halogen fixtures.
- With our Dimming Controller option, the lights can be dimmed at night to reduce glare - select from three brightness levels.
- Available for non-airport applications such as heliport and architectural lighting with LED or 50W, 120V or 240V lamps.



Specifications

- Low profile: .39" (10mm).
- Light channel within .2" (5mm) of grade.
- Color beam variations achieved by dichroic coating.
- Exceeds L-861 photometric requirements when used as a medium intensity clear runway edge light.
- Lamp bypass options available if required.
- 8" style: net weight 6.6 lbs. (3kg), gross weight 7.7 lbs. (3.5kg). Carton size: .23 cu. ft. (.007 cu. meters); 9" (d) x 9" (w) x 5" (h) (229mm (w) x 229mm (d) x 127mm (h))

LED Version

- Energy saving, less than 8W.
- Low maintenance - LED light source has 50,000 hour lifetime (50X longer than halogen).
- Monochromatic output of LEDs is more conspicuous than halogen.
- Pilots prefer LED over halogen because of increased visibility.
- LED can be used with 120V/240V, 50Hz/60Hz power.
- Power adapter included.

Visible/Infrared LED Option

- Night Vision Goggle (NVG) compatible.
- Optical Specifications:
 - Infrared Output:
 - Exceeds SAE Aerospace recommendations for Landing/Taxi Lights.
 - Usable beam width: 55° to 125° vertical, 360° horizontal.
 - Output wavelength: 850nm.
 - Visible Output:
 - Exceeds ICAO requirements for green LEDs (see photometric chart).
 - Usable beam width: 30° vertical, 360° horizontal.
 - Output wavelength: 530nm.
- Electrical Specifications:
 - Input voltage range: 100 to 240 VAC.
 - Input frequency: 50 or 60Hz.
 - Input current: 40mA AC.
 - Input power to the fixture: 10W.
 - Fixture is internally grounded for installer safety.

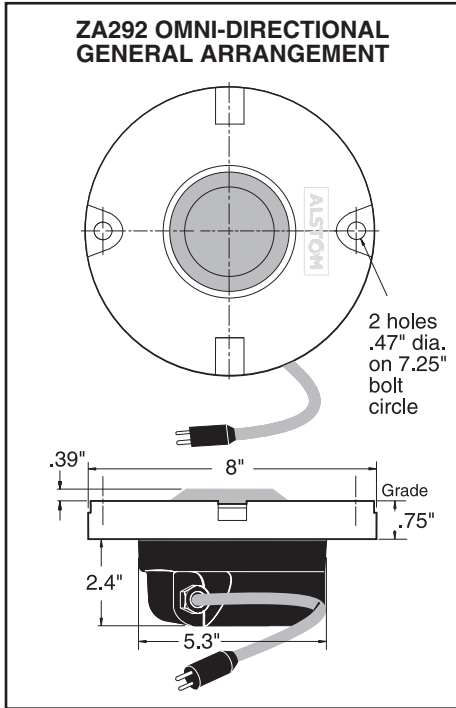
Visit our web site: www.flightlight.com



Flight Light Inc.
 2708 47th Ave.
 Sacramento, California, U.S.A.
 95822-3806

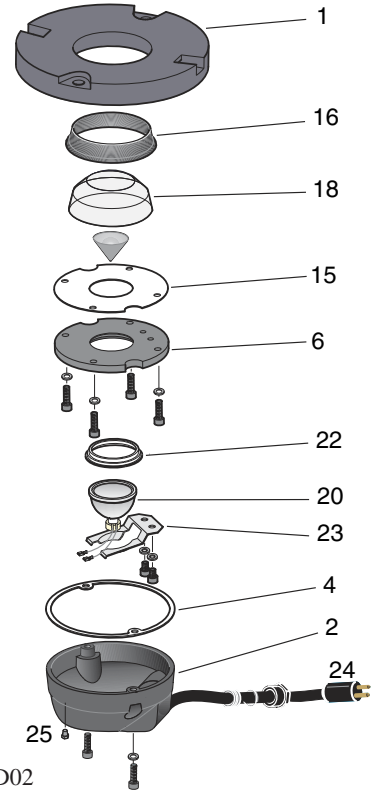
PH (916) 394-2800 FX (916) 394-2809
 TF (800) 806-3548 EM info@flightlight.com

ZA292
LED or Halogen
Heliport Perimeter
Inset Light



Common Replacement Parts

1	Body Casting (Std) – Anodized	
2	Deep Bottom Cover Casting	80-040206
ALT	Shallow Bottom Cover Casting	80-040101
N/A	Elkay Gland Set	80-021114/5/6
4	Bottom Cover Gasket	80-033080
6	Prism Clamp	80-021307
8	Bottom Cover Spinning Clamp	80-021311
15	Prism Clamp Gasket	80-021309
16	Prism Gasket	80-033090
18	Green Prism Dome	80-019183
ALT	Yellow Prism Dome	80-019181
ALT	Red Prism Dome	80-019182
ALT	Blue Prism Dome	80-019190
ALT	Clear Prism Dome	80-016080
20	50W 120V Reflector Lamp	LA-008084
N/A	120V/240V lamp holder	80-015057
N/A	3-Pin Connector (Halogen)	80-013031
N/A	Female Connector (Halogen)	80-012022
22	Lamp Gasket	80-033077
23	Lamp Retaining Spring	80-032039
24	B-Type Male Lead (LED Only)	TRC-10518-114D02
25	Pressure Test Plug	80-021343
ALT	Schroeder Tank Valve	80-021327



Ordering Codes

Fixture	Output*	Lamps
HL-ZA292A	G: Green (std) B: Blue C: Clear R: Red Y: Yellow IR: Infrared	50: 50W, 120V 52: 50W, 240V LP: 120V/240V LED** LV: 12V LED LVD: Dimming 12V LED
HL-ZA292A		

* Green is currently the recommended color for heliport perimeter lights. Infrared can be used in conjunction with color LEDs.
 ** Color LED with clear prism. Power adapter included, 120V/240V.

Photometric Comparison with ICAO Requirements

Vertical Angle (Deg)	Avg. Intensity (Cd)	ICAO Spec (Cd)
2	70.8	15
5	66.5	30
10	48.3	15
13	36.6	8
20	23.9	3

Visit our web site: www.flightlight.com

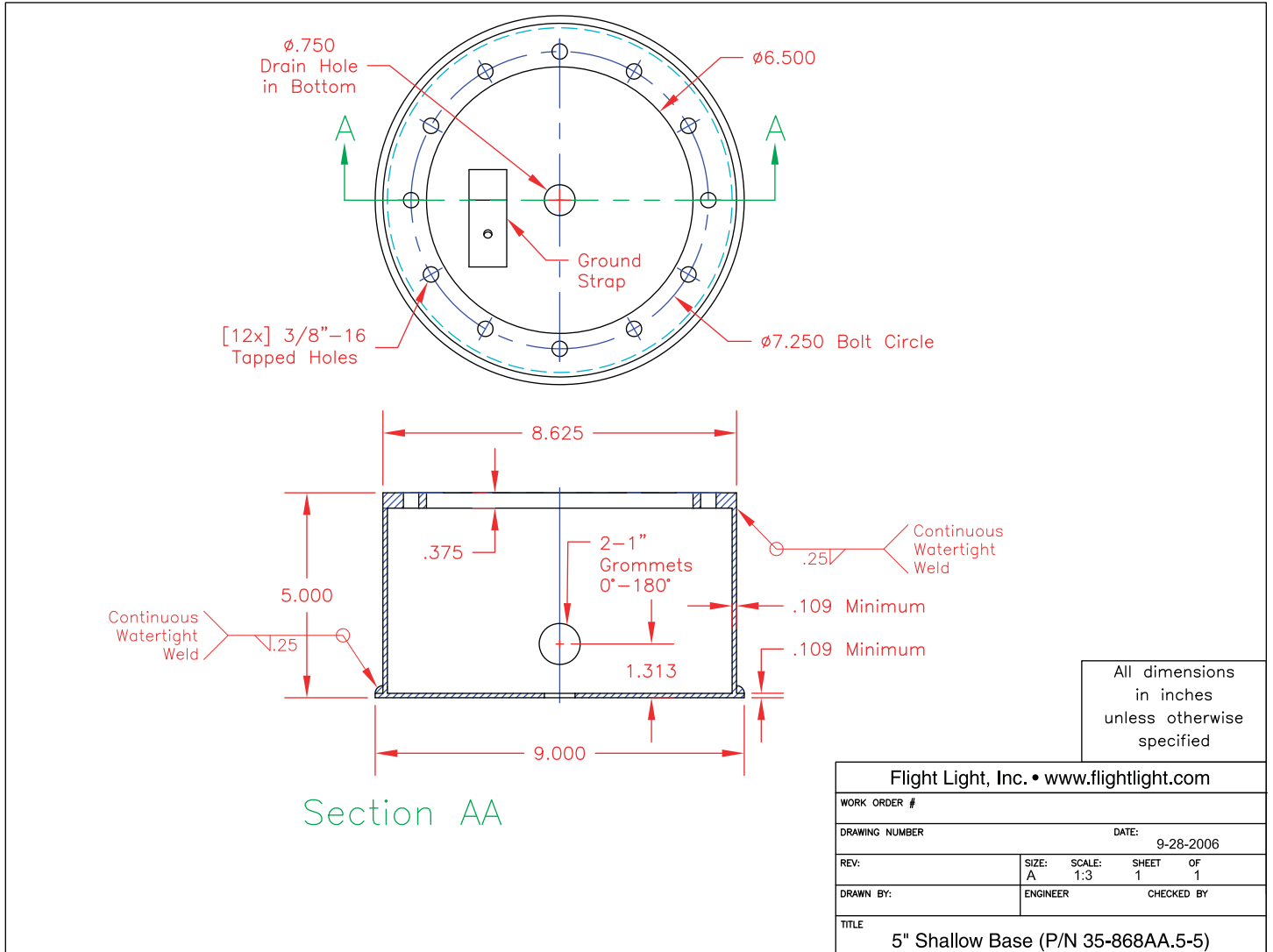


Flight Light Inc.
 2708 47th Ave.
 Sacramento, California, U.S.A.
 95822-3806

PH (916) 394-2800
 TF (800) 806-3548

FX (916) 394-2809
 EM info@flightlight.com

ZA292
LED or Halogen
Heliport Perimeter
Inset Light



Visit our web site: www.flightlight.com