



Flight Light Inc.
2708 47th Ave.
Sacramento, California, U.S.A.
95822-3806

PH (916) 394-2800 FX (916) 394-2809
TF (800) 806-3548 EM info@flightlight.com

HL-392 LED or Halogen Helideck Semi-Flush Perimeter Inset Light

Compliance

FAA AC 150/5390-2B Heliport Design Guide
ICAO Annex 14, Volume II
UK CAA CAP 437, Chapter 4, paragraph 3.1
Transport Canada TP14371, AGA 7.17

Applications

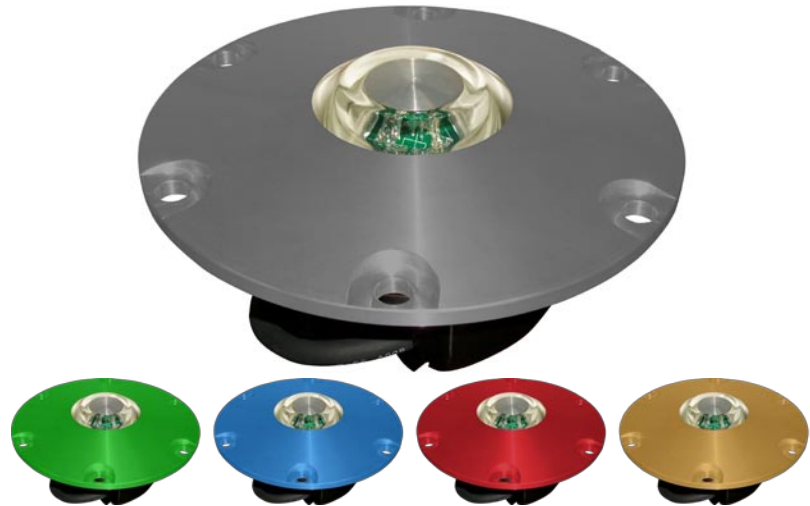
Semi-flush perimeter light helps mark helipad touchdown and lift-off area (TLOF) and/or final approach and takeoff area (FATO) for metal helidecks and pavement heliports.

Why Our HL-392 is Better

- Recessed, semi-flush mounted, allows for obstruction-free movement of equipment and personnel.
- Corrosion resistant anodized finish suitable for marine environments and available in many different colors.
- Lightweight and robust aluminum alloy construction.
- Drop into metal helideck and fasten with 6 bolts.
- Pressure test plug ensures moisture-proof light cavity.
- Prism removal and replacement achieved without need for adhesives or sealants.
- Pre-focused optics simplify maintenance.
- Available in 12-24 VDC or 120 VAC versions.
- Direct retrofit, drop in replacement. Factory retrofits available for your existing halogen fixtures.
- With our Dimming Controller option, the lights can be dimmed at night to reduce glare - select from three brightness levels.
- Available for non-heliport applications such as architectural lighting.

Specifications

- Anodization: Aluminum Fixtures, machined stock 6061T6. Anodize Mil 8625 Type III, 1 mil thick.
- Testing Facilities: Salt Fog, Salt Spray, and Cyclic Corrosion Testing. Mil Std 810G.

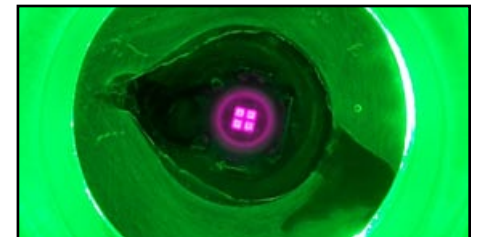


Custom color matching is available to meet your design specifications

- Low profile: .81" (base can mounted), 1.06" (helideck mounted).
- Bolt circle: 7.25"
- Light channel within .2" (5mm) of grade.
- Color beam variations achieved by dichroic coating.
- Exceeds L-861 photometric requirements when used as a medium intensity clear runway edge light.
- Lamp bypass options available if required.
- 8" style: weight 4.65 lbs. (2.1kg). Carton size: .23 cu. ft. (.007 cu. meters); 9" (d) x 9" (w) x 5" (h) (229mm (w) x 229mm (d) x 127mm (h))

LED Version

- Energy saving, less than 4W.
- Power adapter included.
- Low maintenance - LED light source has 50,000 hour lifetime (50X longer than halogen).
- Monochromatic output of LEDs is more conspicuous than halogen.
- Pilots prefer LED over halogen because of increased visibility.
- LED can be used with 120V/240V, 50Hz/60Hz power.



Visible/Infrared LED Option

- Night Vision Goggle (NVG) compatible.
- Optical Specifications:
 - Infrared Output:
 - Exceeds SAE Aerospace recommendations for Landing/Taxi Lights.
 - Usable beam width: 55° to 125° vertical, 360° horizontal.
 - Output wavelength: 850nm.
 - Visible Output:
 - Exceeds ICAO requirements for green LEDs (see photometric chart).
 - Usable beam width: 30° vertical, 360° horizontal.
 - Output wavelength: 530nm.
- Electrical Specifications:
 - Input voltage range: 100 to 240 VAC.
 - Input frequency: 50 or 60Hz.
 - Input current: 40mA AC.
 - Input power to the fixture: 10W.
 - Fixture is internally grounded.

Visit our web site: www.flightlight.com



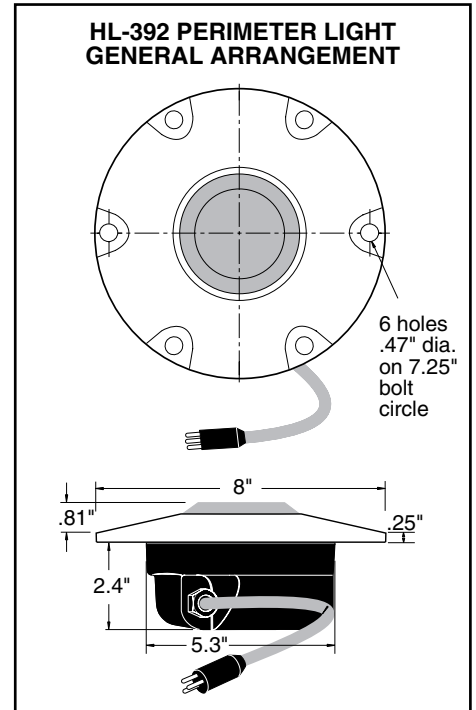
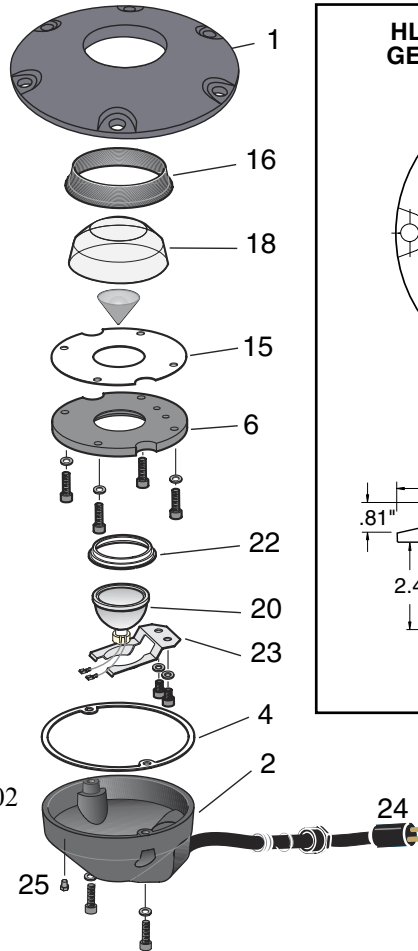
Flight Light Inc.
 2708 47th Ave.
 Sacramento, California, U.S.A.
 95822-3806

PH (916) 394-2800 FX (916) 394-2809
 TF (800) 806-3548 EM info@flightlight.com

HL-392 LED or Halogen Helideck Semi-Flush Perimeter Inset Light

Common Replacement Parts

- 1..... Body Casting (Std) – Anodized
- 2..... Bottom Cover Casting..... 80-040206
- N/A... Elkey Gland Set 80-021114/5/6
- 4..... Bottom Cover Gasket..... 80-033080
- 6..... Prism Clamp 80-021307
- 8..... Bottom Cover Spinning Clamp ... 80-021311
- 15..... Prism Clamp Gasket..... 80-021309
- 16..... Prism Gasket 80-033090
- 18..... Green Prism Dome..... 80-019183
- ALT .. Yellow Prism Dome..... 80-019181
- ALT .. Red Prism Dome 80-019182
- ALT .. Blue Prism Dome 80-019190
- ALT .. Clear Prism Dome 80-016080
- 20..... 50W 120V Reflector Lamp LA-008084
- N/A... 120V/240V lamp holder..... 80-015057
- N/A... 3-Pin Connector (Halogen)..... 80-013031
- N/A... Female Connector (Halogen) 80-012022
- 22..... Lamp Gasket..... 80-033077
- 23..... Lamp Retaining Spring 80-032039
- 24..... B-Type Male Lead (LED Only) ... TRC-10518-114D02
- 25..... Pressure Test Plug..... 80-021256
- ALT .. Schroeder Tank Valve..... 80-021327



Ordering Codes

Fixture	Output*	Lamps	Custom Color***
HL-392	G: Green (std)	50: 50W, 120V	G: Green
	B: Blue	52: 50W, 240V	B: Blue
	C: Clear	LP: 120V/240V LED**	R: Red
	R: Red	LV: 12V LED	Y: Yellow (hard gold)
	Y: Yellow	LVD: Dimming 12V LED	
	IR: Infrared		
HL-392			

* Green is currently the recommended output color for heliport perimeter lights. Infrared can be used in conjunction with color LEDs.
 ** Color LED with clear prism. Power adapter included, 120V/240V.
 *** Gray anodized is the standard finish.

Photometric Comparison with ICAO Requirements

Vertical Angle (Deg)	Avg. Intensity (Cd)	ICAO Spec (Cd)
2	70.8	15
5	66.5	30
10	48.3	15
13	36.6	8
20	23.9	3

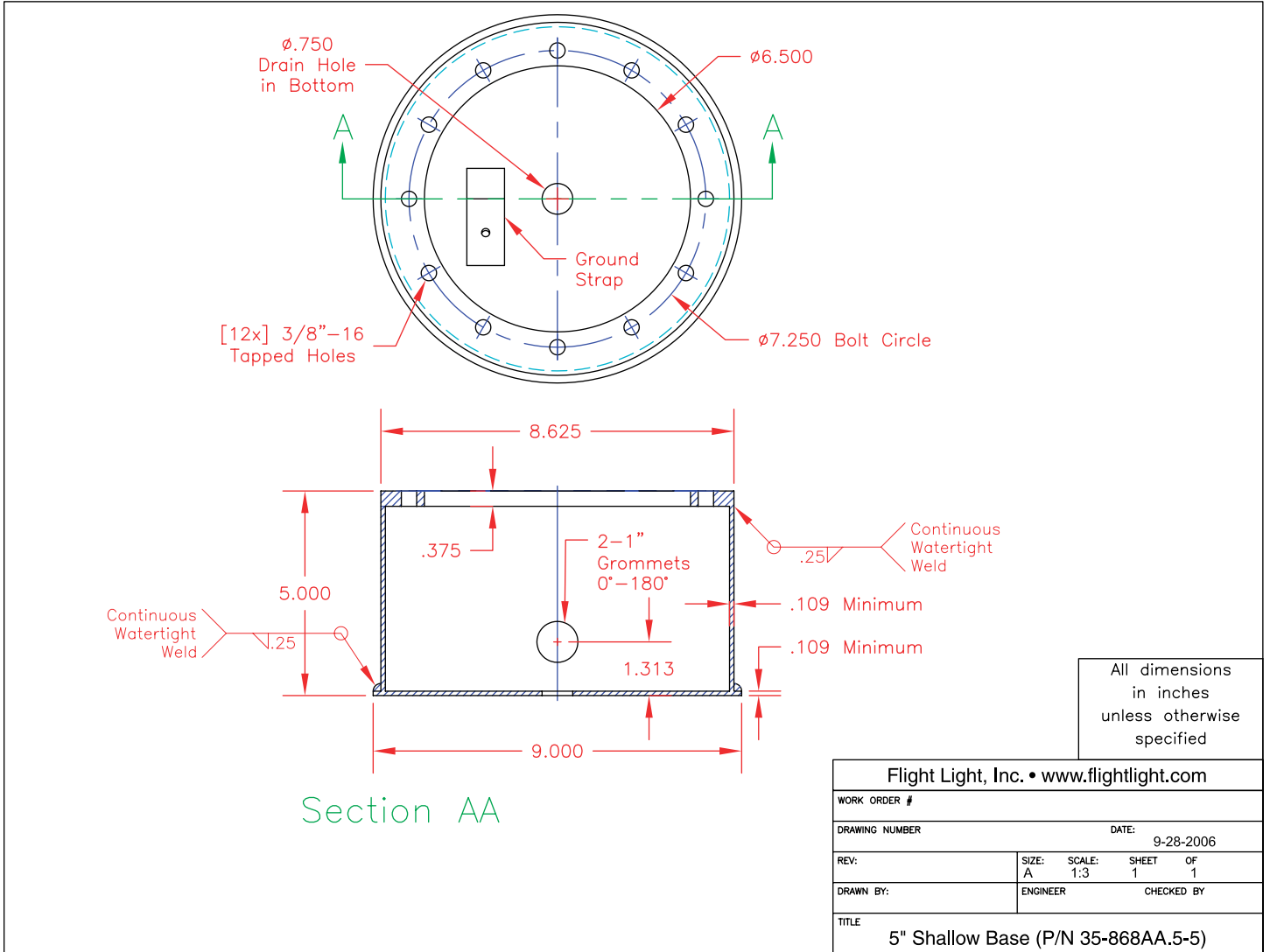
Visit our web site: www.flightlight.com



Flight Light Inc.
 2708 47th Ave.
 Sacramento, California, U.S.A.
 95822-3806

HL-392
LED or Halogen
Helideck Semi-Flush
Perimeter Inset Light

PH (916) 394-2800 FX (916) 394-2809
 TF (800) 806-3548 EM info@flightlight.com



Visit our web site: www.flightlight.com